



# Bicycle Safety in Driver Education Curriculum

SAME ROADS ... SAME RIGHTS ... SAME RULES





# Objectives


---

- ❑ Learn about ***Share the Roads*** with bicyclists.
- ❑ Learn ***safety tips*** to prevent crashes with bicyclists and save lives.
- ❑ Learn about ***bicycle facilities***.

# Share the Roads

---



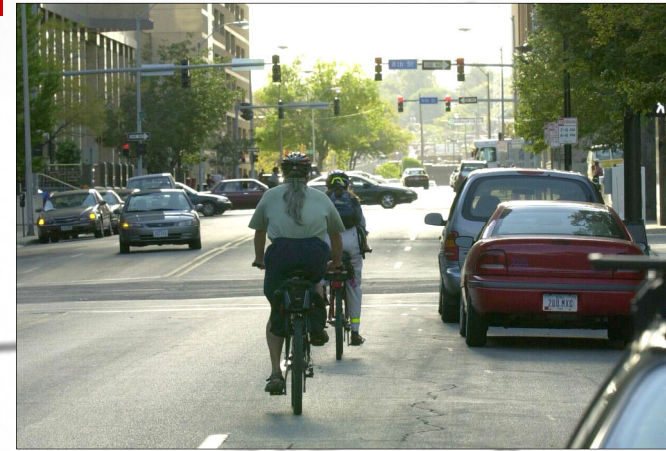
 Bicyclists have the **same rights and responsibilities** as drivers of motor vehicles.

 As motorists, we **must** respect the rights of other road users including bicyclists.





# ***Safety Tip #1: Bicyclists must travel on the right side of lane.***







# **Safety Tip #2: Assess the bicyclist's capabilities.**







# **Safety Tip #3: Expect the unexpected.**







# **Safety Tip #4: Be aware of hazards.**







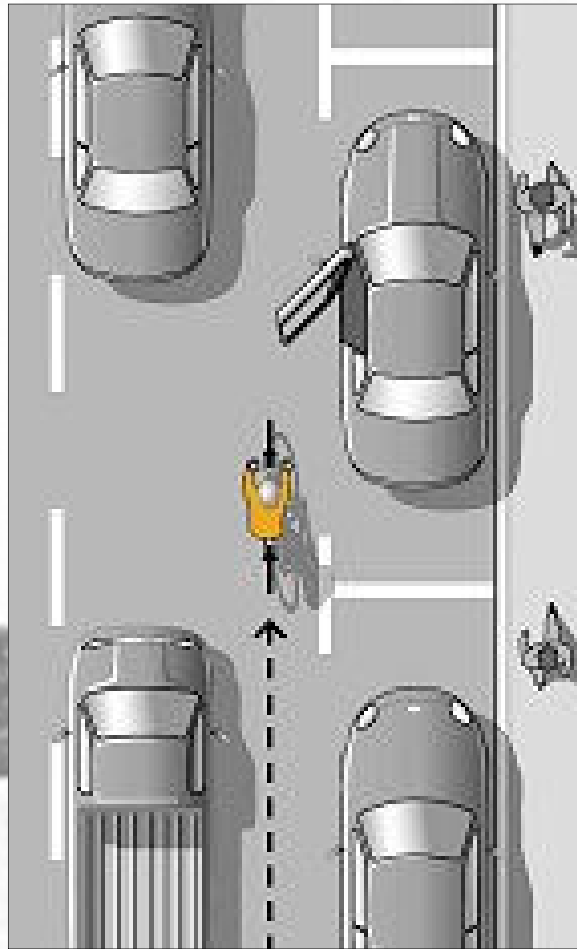
# **Safety Tip #5: Do not honk or flash your headlights at bicyclists.**







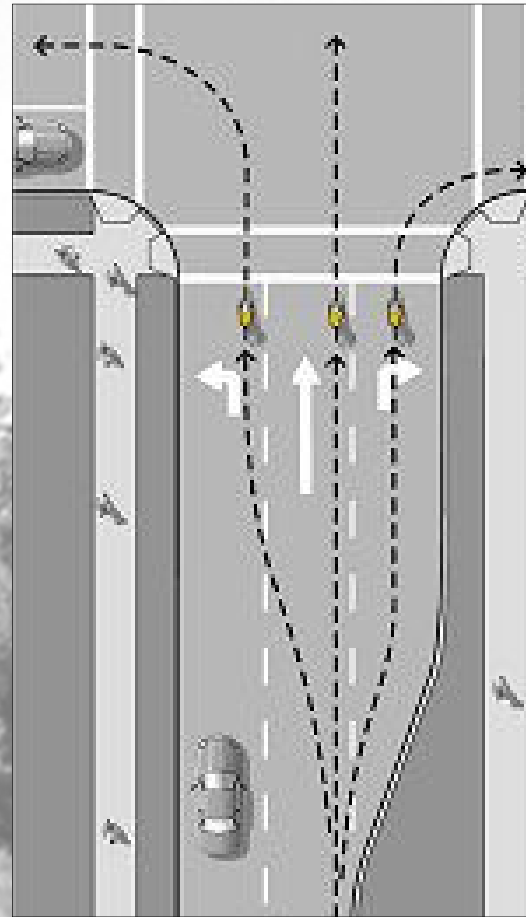
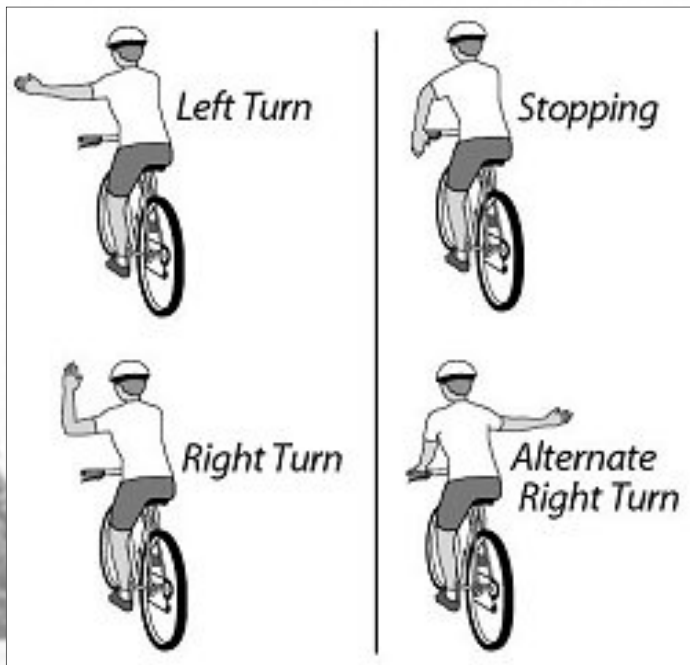
# ***Safety Tip #6: Be careful when opening your vehicle door.***







# **Safety Tip #7: Look for hand signals.**







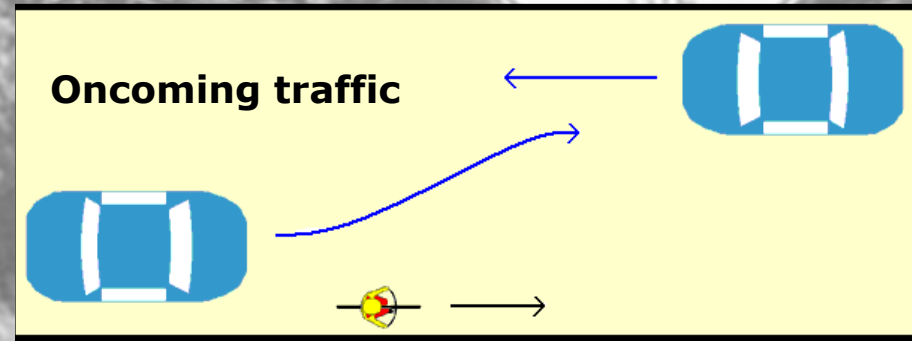
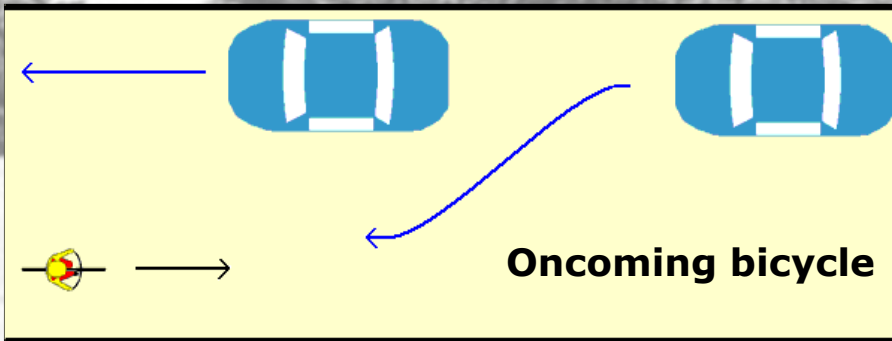
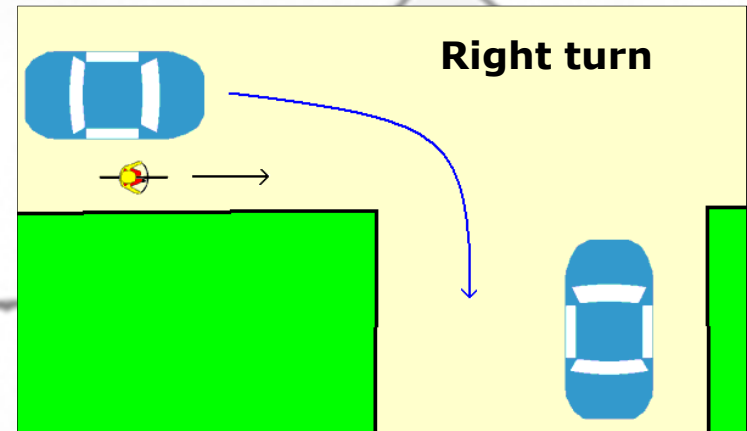
# **Safety Tip # 8: Do not tailgate, cut or pass too close to bicyclists.**







# **Safety Tip #9: Use extra caution when passing bicyclists.**





# Off-the-Road Facilities

---



***Trails*** are in open spaces, parks, along rivers, on abandoned railroads, or in new developments.

---



# Off-the-Road Facilities

---



***Facilities adjacent to roads*** are facilities separate from motorists **except** at intersections and driveways.

---



# On-the-Road Facilities

---



**No shoulders**



**Bike lanes**









**Paved shoulders**



# Summary

---






-  Bicyclists must travel on the **right side of a lane**.
-  Assess the bicyclist's **capabilities**.
-  Expect the **unexpected**.
-  Be aware of **hazards**.
-  Do **not** honk or flash your headlights at bicyclists.
-  Be careful when **opening** your vehicle door.





# Summary






---

-  Look for **hand signals**.
-  Do **not** tailgate, cut or pass too close to bicyclists.
-  Use **extra caution** when passing bicyclists.
-  Move your vehicle **entirely** into the **left lane** when passing a bicyclist.
-  Do **not** pass a bicyclist or another vehicle if oncoming traffic is near.



# Summary

---

-  Do **not** pass a bicyclist if you will make a right turn shortly after passing.
-  Be on the lookout for bicyclists in **bad weather** and at **night**.
-  When **turning left** at an intersection, **yield** to oncoming bicyclists.
-  After passing a bicyclist, **check over your shoulder** and make sure you have enough room before moving over.
-  **When in doubt**, yield to bicyclists.